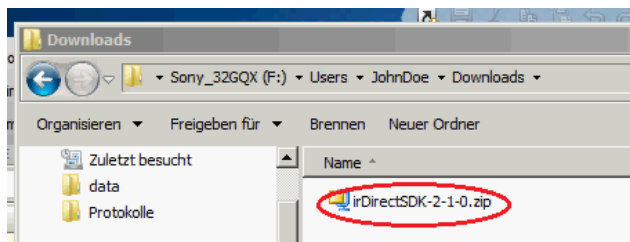
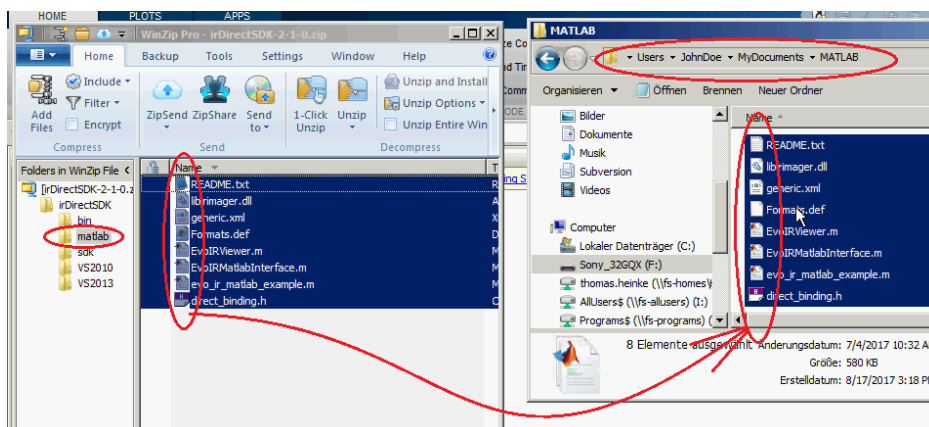


Steps to install and run the MATLAB-Sample program:

- Connect your PI camera to the computer
- Recommended: verify with PICconnect that the PICamera is working
- Launch MATLAB
- Locate the iRDirectSDK on your computer, it is most likely in your “Download”-folder



- Open the ZIP-File
- Locate and open the “matlab” folder, select all files and unzip them into your MATLAB-workspace



- Locate and Run the “evo_ir_matlab_example.m” in your MATLAB-workspace, an extra window with a live image should open, inspect the “evo_ir_matlab_example.m” script to learn how to access temperature data from the PI-camera

